

350 BLEECKER STREET NEWSLETTER #146

December 5, 2001

The Design Committee (Bob Bangiola, Valerie Coster, Mark Lilien, Stephanie Phelan, and Mary Sculley) met for the first time on December 4. Among the decisions made:

PLANTERS ALONG BLEECKER STREET – URGENT – DECISION NEEDED BY SUNDAY

Two plans were submitted. Newsletter 143, distributed in early November, had a plan submitted by Ron Walker. However, after that plan was submitted, the Design Committee requested an alternative plan from Ani Antreasyan, a Manhattan-based landscape designer. Ani's plan was endorsed by the majority of the Design Committee. **The Committee needs a quick decision, so that planting can be finished. No one wants to see another season go by without the planters being filled.** A copy of each plan is attached. Both plans may have similar costs, if weekly professional care is also purchased.

SUMMARY OF THE 2 PLANS

Ani Antreasyan is a Manhattan-based landscape designer. Her design is based on simple, clean lines, fitting in with similar installations in the area. She chose approximately 70 plants in 3 species: 1 ground cover, 1 shrub, and 1 tree. The ground cover, golden child ivy, is a light green. The shrub and ivy are evergreen. The tree is a birch with an exfoliating white bark, whose leaves drop in the cold season. Placement of the plants is in a regular, consistent pattern.

Ani's price is \$18,000 for installation plus \$3,000 for weekly care (\$250 per month) for 1 year. Ani will train the staff to care for the plants properly. The Design Committee is still negotiating with Ani and other suppliers to see if the price can be reduced. The plants are guaranteed for 1 year.

Ron Walker is a landscape architect based in Lambertville New Jersey. He teaches landscape architecture at Mercer County Community College. His design philosophy is the opposite of Ani's. His plan uses approximately 140 plants in 10 species. The leaves vary in color. Wintercreeper is red and the other plants have varying shades of green. His plants have leaves all year, except for the magnolia trees (which are not evergreens), that also flower in the summer. Placement of the plants is in a varied pattern.

Mund's, the Lambertville, New Jersey nursery who will install Ron's plan, will charge \$17,400 and guarantee the plants for 1 year. They will train the building staff how to care for the plants. They do not supply weekly care normally, but they may suggest a skilled local person do this, if needed, for an extra charge.

Ron's design fee was \$480. Ani's design fee is built into the price of the installation.

SUMMARY OF DESIGN COMMITTEE RECOMMENDATION

The majority of the Design Committee prefers Ani's plan because she has substantial experience designing successful installations in Manhattan. Ron Walker's practice is in Lambertville, New Jersey. The majority of the Committee believes that issues of plant life expectancy, design appropriate to a Manhattan setting, and local weekly service are critical. Furthermore, the majority believes Ani's design will fit more appropriately with the building and the neighborhood. If more plants are desired in the future, they can be added after the winter is over.

QUESTIONS

If you have questions or suggestions, or would like to come to future Design Committee meetings, please call:

Bob Bangiola, 1D, 212 924 0709
Valerie Coster, LK, 212 989 9490
Mark Lilien, 3E, 212 929 4619
Stephanie Phelan, 2V, 212 620 0652
Mary Sculley, LJ, 212 741 0530

SHAREHOLDER COMMENTS

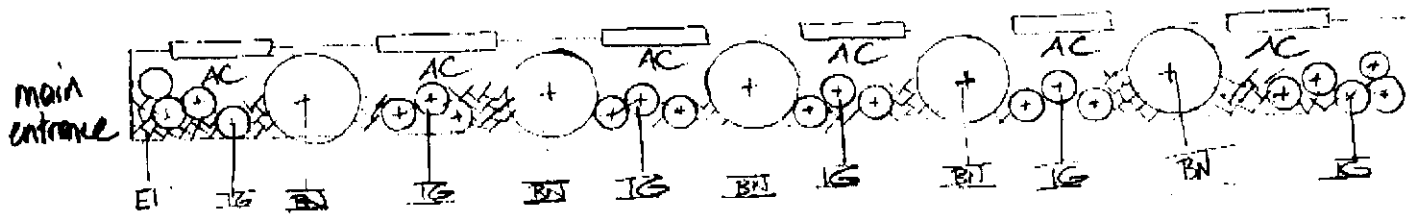
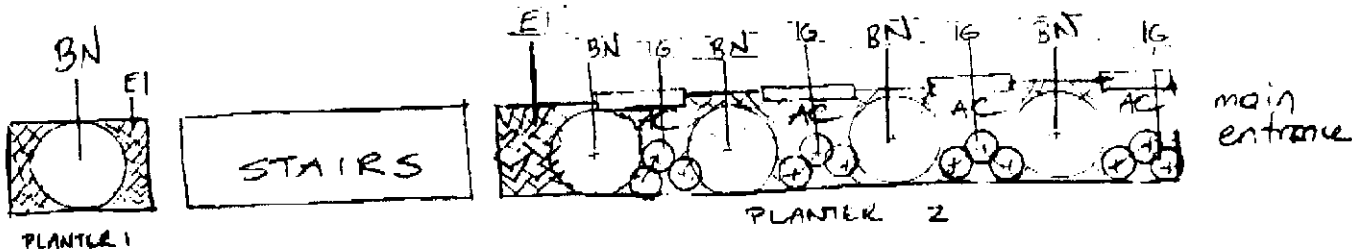
While several people on the co-op board prefer the design submitted by Ron Walker, the Design Committee accepted the selection of Ani Antreasyan. Since the cost is around \$20,000, and the visual impact is substantial, the co-op board and the Design Committee would appreciate shareholder comments and opinions, if they differ from the Design Committee's decision. **If you agree with the Design Committee you need not submit any paperwork at all.** If a large number of people object to the decision or raise unexpected issues, then the co-op board and the Design Committee may have to make further adjustments to accommodate the majority of the shareholders.

If you prefer to keep your comments and suggestions confidential, please write your message below, and place it into an envelope. Seal the envelope and on the outside, print your name, apartment number, and sign it. Slip the envelope under the door to 6R, Susan Kim. Or you can fax your comments to Susan at 212 242 7919. If you want to keep your fax confidential, please fax a second sheet with your signature, apartment number, and printed name, which will be attached by Susan Kim to the outside of a sealed envelope, with your fax inside. All the confidential messages will be opened by Andrew Brucker, who will give the message contents to the co-op board and the Design Committee. **Because the weather may soon get too cold for planting, please submit your comments within a day of your receipt of this letter.**

Thank you.

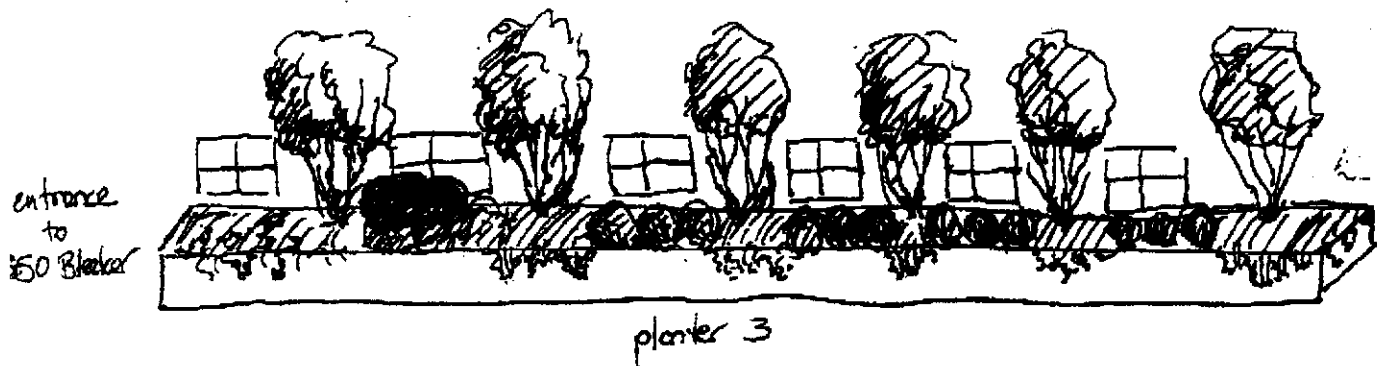
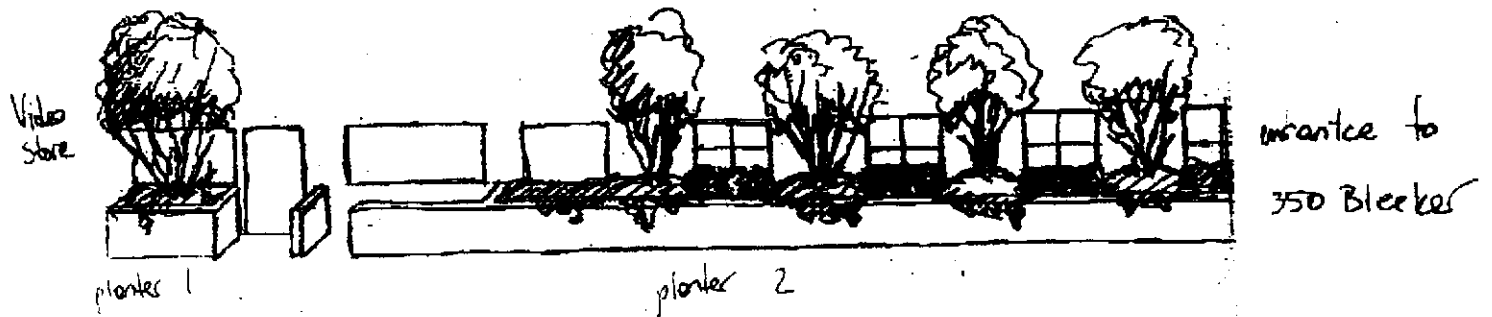
Comments and suggestions _____

		Size	Quantity	Comments
EI	English Ivy	1' HT	30	Undergrowth
BN	Betula Nigra / Clump River Birch	7'-9' HT	11	Branchy tree w/ white bark
IG	Ilex Glabra / Ink Berry	3'-4' HT	33	Round shrubs



PAGE 1 - ANI ANTREASIAN PLAN

CANYAN DESIGNS

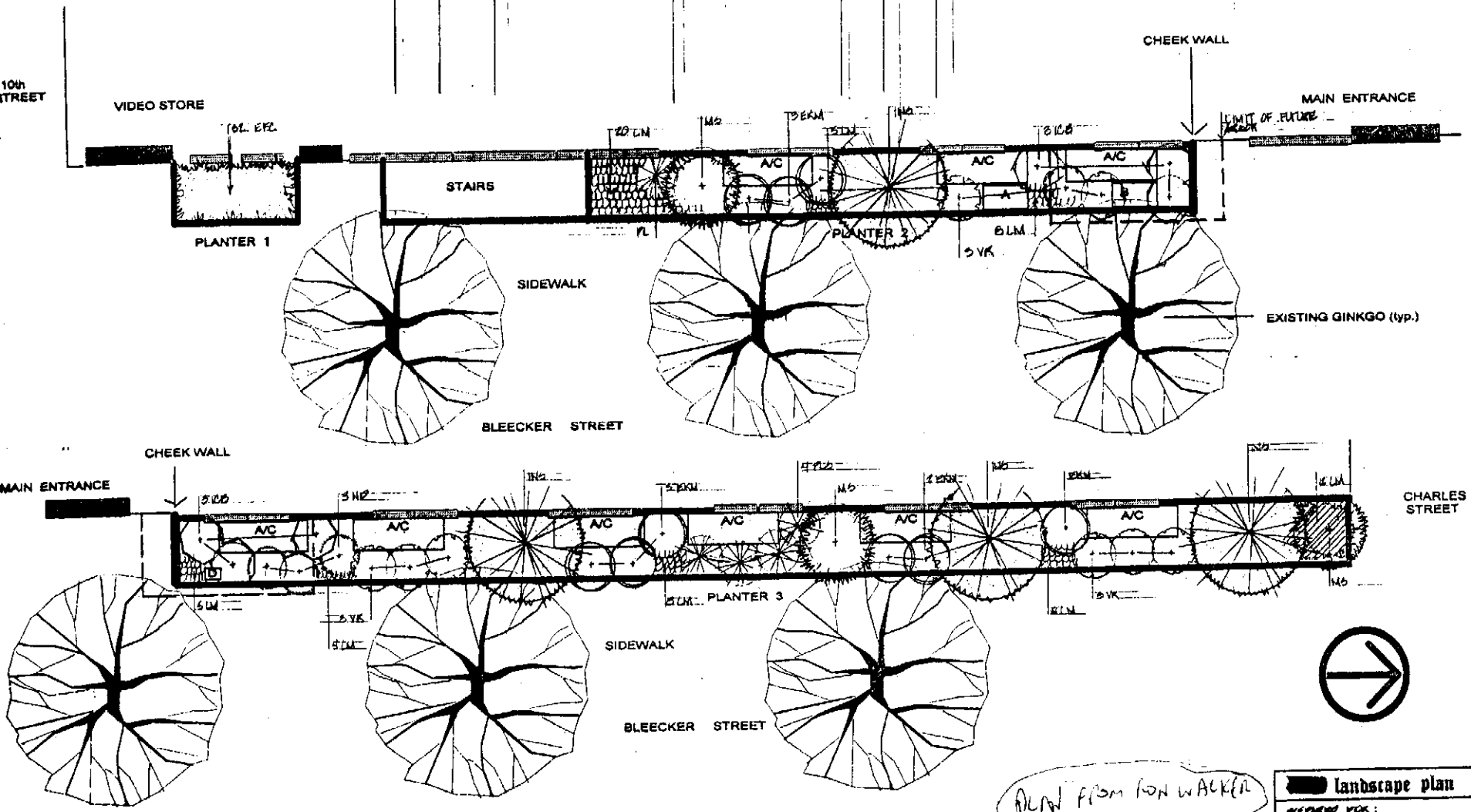


PAGE 2 - ANI ANTALASTAN PLAN

PLANT LIST

KEY	PLAN.	BOTANICAL NAME	COMMON NAME	SIZE	ROOT	COMMENTS
EPD	26	ERODIUM CILIATUM	RED WINTERGREEN	4-5 FT	24 TB	PLANT PER 10
EKM	5	ERODIUM CILIATUM	RED WINTERGREEN	4-5 FT	24 TB	
W2	4	WIKSTRÖMIA FLORIBUNDA	WILLOW	6-7 FT	24 B	
R2B	6	RIBES SCOPOLI	SMALL BUCKLEBERRY	4-5 FT	24 B	
CM	30	CORONILLA ALLIARIA	CLYTHEA	10 FT	10 FT	PLANT PER 10
MS	3	MAISONIA STELLATA	STRAW WAGON	5-6 FT	24 B	
AC	1	ACER LACINIAE	WEEPING BIRCH	3-5 FT	24 B	
VK	9	VIBURNUM KAWAIIENSE	LEATHERLEAF VIBURNUM	4-5 FT	24 B	
ND	5	NANDINA DOMESTICA	HEAVENLY BAMBUS	3-4 FT	24 B	
PL	7	PRUNUS LAUROCECIS	LAUREL	4-5 FT	24 B	

NOTED:
 CONTRACTOR TO BE RESPONSIBLE FOR PROPER
 SOIL TYPES TO FIT LOCATIONS AS SHOWN ON
 PLAN.
 ADDITIONAL SOIL TO BE PROVIDED AS
 NEEDED.
 NOTICE ALL EXPOSED AREAS.



PLAN FROM ION WALKER

Tom Walker
 C.C.R.
 Box 059
 Lumberville, N.J. 08530

landscape plan

PREPARED FOR:
 MARK LILLEN
 350 BLEEKER STREET
 N.Y.C., N.Y. 10014

SCALE: 1" = 4'-0" DATE: 3/1/01 JOB No: 1800